



LONG LAKE NEWS

A PUBLICATION OF THE LONG LAKE ASSOCIATION

SPRING 2022 NEWSLETTER

JUNE 2022

PRESIDENT'S MESSAGE | Brent Schnell

A “shout out” to our current members for your continued support of the Long Lake Association (LLA) through these challenging times! We will continue to strive to accomplish our main mission “to preserve Long Lake as a natural resource and recreation area through protection and prudent use of its environs.” As part of this mission, we continue to have great success in controlling the levels of Eurasian Watermilfoil (EWM) thanks to your support. We will strive to evolve our treatment program to take advantage of all possible control measures to create a hybrid approach including benthic barriers, new treatment types, etc. For example, we will be conducting a pilot of a new state-of-the-art treatment for EWM in Mickey Lake in 2022 and are planning a benthic barrier pilot in 2023. In 2022, we will fully reinstate the NMC intern program to assist us in our water quality studies.

Based on the discovery of zebra mussels in Long Lake, we created a new committee in 2021 to track the presence of this invasive species and provide education to our members. In 2021, our sister organization, Long Lake Foundation (LLF), created the “LLF Invasive Species Defense Fund” to help fund the study and remediation of both aquatic and terrestrial invasive species in and around Long, Mickey, and Ruth Lakes. Contributing to this LLF fund at this link represents another way for you to support our invasive species remediation efforts: <https://www.longlakefoundation.org/donation-form.html>. Please put “LLF Invasive Species Defense Fund” in the comment section.

In 2022, we will be proposing by-law changes to change to a calendar fiscal year, update notification methods, etc. This will be included in the ballot that will be sent prior to the August meeting. Please check out our website as we will continue to provide pertinent information regarding issues involving our lakes at <https://longlakeassociation.com/>.

We are happy to announce a return of the Welcome Back to Paradise Party at Boone's Long Lake Inn for 2022 on June 6th at 5:00 PM. Please take time to read through this newsletter to get updates from the Committee Chairs prior to the meeting. We will provide a brief summary of this info at the meeting. I would like to encourage those that are not LLA members to join for the annual membership fee of \$35.00 to help us in our mission to protect our lakes by using the enclosed dues envelope. I would sincerely like to thank our partners: Oleson Foundation, Long Lake Township, Long Lake Foundation, and NMC for their ongoing support! **We are looking forward to meeting everyone when we get together again in June!**

Sincerely,
Brent Schnell



LAKE MANAGEMENT TREATMENT COMMITTEE | Brent Schnell / Dave Baker

The Lake Management-Treatment Committee and our key lake management partners met on March 30, 2022. The purpose of the meeting was to analyze the drone mapping pictures following the 2021 applications, evaluate the success of the two treatments and plan for the 2022 season. Zero Gravity (the drone company) presented us with data to help plan for 2022. Clear Water Lake Management (our herbicide applicator) was also at the meeting to help us interpret the information and do planning for 2022. In 2021, approximately 12 acres were treated. This represents only 0.4% of the combined total surface area/bottomlands of Long, Ruth, and Mickey lakes.

We plan to continue to treat the aquatic invasive species Eurasian Watermilfoil (EWM) twice each year to improve the quality of the lakes for boating, etc., using advanced technology to precisely target the treatment to where it is needed. The 2022 plan is to treat approximately the same total area as in 2021 (e.g., 12 acres); some areas were treated in 2021 that will not require treatment this year. Many of the sites that contained the aquatic invasive species Eurasian Watermilfoil (EWM) are growing native plants now that the Eurasian Watermilfoil is gone. Some areas were treated successfully in past years, but now the Eurasian Watermilfoil has returned, requiring treatment in 2022. **Treatment dates for 2022 are Wednesday, June 22, 2022, and Wednesday, July 20, 2022. The rain date will be the next day, if necessary.** To continue to pursue the best EWM treatment alternatives available, please note that the Long Lake Foundation (LLA) will conduct a trial with ProcellaCOR EC in Mickey Lake in June 2022 to control EWM. Please review the article on this topic in the newsletter.

The Long Lake Association (LLA) continuously evaluates new potential treatments to best control Eurasian Watermilfoil (EWM) while minimizing any impacts on the lakes. Based on this objective, the LLA will conduct a trial with ProcellaCOR EC in Mickey Lake in June 2022 to control EWM. We treat EWM since it spreads quickly and proliferates, crowding out native plants, reducing fish habitats, and reducing wetland habitats for native animals. It can also create dense mats near the water surface that entangle boat propellers and make it difficult to swim or fish.

ProcellaCOR EC is a new, state of the art treatment for invasive aquatic plant species like EWM with the benefits listed below:

- ProcellaCOR EC is selective. It targets explicitly Eurasian Watermilfoil (EWM) and other invasive aquatic plant species, and it won't hurt the native plants we want in the lakes.
- ProcellaCOR EC reduces chemical usage through more extended control. Less product is required for treatment since ProcellaCOR EC has a unique formula that requires a 40x-100x less active ingredient that still achieves significantly longer control. A "Reduced Risk" classification from the EPA is designed to reduce risk to our health, non-target plants, and water supply. The EPA says ProcellaCOR EC is "practically non-toxic" to animals and humans.
- Since ProcellaCOR EC will keep EWM at bay for much longer than other solutions, it reduces the need for two treatments per year as is typically required with other treatment options.
- ProcellaCOR EC has a short half-life (when it takes half of the active ingredient to degrade) and quickly dissipates with the water column. Typically, ProcellaCOR EC is not expected to be detectable in the water within 24 hours of treatment.

It should be noted that ProcellaCOR is cost-effective in shallow water applications but becomes prohibitively expensive in deeper water applications. Therefore, the LLA intends to focus its efforts on coming up with the best possible hybrid approach to EWM treatment, including other solutions like benthic barriers.

ISLAND MAINTENANCE | Adam Adamczak

Long Lake's five islands provide lake users with a unique opportunity for recreation. Picnics, hiking, and anchoring off the islands' shores are encouraged. However, fires and camping on the islands are prohibited. Removal of trash is a must, and any garbage taken off is appreciated. Pristine islands are a must for everyone to enjoy. Remember to avoid steep banks along shorelines to help prevent erosion. Poison ivy and the occasional fallen tree can be found along island trails, so hike cautiously.



I look forward to seeing everyone's smiling faces on the islands this summer. Enjoy!

MEMBERSHIP | Becki Watson

Happy Spring! As I am writing this article, we have 28 MPH winds, and the ice is on its way out. Yay! It's that time of year to either renew your membership or join LLA. Your membership helps fund the upkeep of the islands, the repair of the loon nest platforms, the testing of water quality, and the monitoring and controlling of invasive species. These are just a few of the many things our association does. A dues envelope for the fiscal year beginning September 1, 2022, is enclosed and is due before August 1, 2022. When paying your 2022-2023 annual dues, please print your name and updated mailing address.; Also, please also provide an email address. Dues forms are available on the website and can be printed or paid online. Thank you for supporting Long, Mickey, and Ruth Lakes, and get ready for a great summer.

Volunteers & Board Members Always Needed

LLA is always looking for volunteers. If you are interested in running for a board position, please get in touch with one of the existing board members. The nomination committee will need to know your interest by the discussion meeting in June. Check the website, www.longlakeassociation.com, and Facebook often for current news and information.

Remind Your House Guests/Renters

If you rent your home/cottage, please remind guests that your neighbors are year-round residents. Please be respectful and keep noise low, especially in the evenings. Turn off outdoor lights before going to bed as these can shine directly into neighboring houses and even into homes across the lake.

To file a complaint about a short-term rental, call the Long Lake township complaint hotline anytime at (231) 600-7044. You can also call the office during regular hours – 8:00 am through 5:30 pm (closed at noon), Tuesdays through Fridays – at (231) 946-2249.

For those operating a wave runner, the law states that A a person shall not operate a PWC on the waters of this state from sunset to 8:00 A.M local time. Contact Marine Patrol (231) 922-2112 to report violators. For more boater safety information, go to <https://mymlsa.org>.

Please be mindful and respectful of the many loons and other wildlife when on the lake. Many loons will have young with them, which are hard to see. Loon Watch's general rule of thumb for good loon etiquette is to keep a distance of two hundred feet from loons and loon chicks. State and federal laws prohibit the disturbance and harassment of the loons and wildlife. There is a \$1,000 fine for harassing a loon in Michigan. Report complaints to Traverse City DNR (231) 922-5280 or Marine Patrol at (231) 922-2112. If this is not successful, contact the DNR at their 24-hour RAP line per the info below:

If you witness a natural resource violation (e.g. loon harassment, poaching, etc.), contact the DNR REPORT ALL POACHING (RAP) line at 800-292-7800 (CALL OR TEXT). The RAP Center is staffed 24 hours, seven days a week. Please take pictures/video, if possible, per the DNR's request. Video is highly preferred! Please provide the MC number of the offending watercraft when reporting incidents. Otherwise, no action can likely be taken.

This information can also be found at the <https://longlakeassociation.com/fish-wildlife/> portion of our website.

WATER QUALITY

Last season Phyllis Laine, Richard Roeper, Intern Kelsey Mills, Intern Meagan Walters, Barry Lishawa, and I (Len Klein) collected samples for chemical analysis and measured physical parameters on Long, Mickey, and Ruth Lakes. While we found some year-to-year variation in several parameters, long-term trends for most parameters appear to be stable. We found no significant algae blooms on the lakes.

Phosphorus levels in the lakes are always a concern. High levels of Phosphorus in the water can cause algae blooms and promote the growth of aquatic plants. We recommend eliminating fertilizer use near the lakes, establishing native vegetative shoreline buffers to catch runoff, and proper septic system upkeep. These are all critical factors in reducing the eutrophication of the lakes, which will help preserve the health of the lake ecosystems, our property values, and recreational use. Some Phosphorus is already in the sediment and is likely permanently buried; but some can be recycled back into the water column. We will be checking bottom sediment Phosphorus levels this summer to determine if this has occurred since they were last measured in 2014.

If you fish in Long Lake, you might be interested to know that Long Lake keeps some dissolved oxygen in the bottom waters through early summer. However, by midsummer Long Lake is stratified, and the bottom water is devoid of oxygen. Most of Mickey Lake and all of Ruth are too shallow to become stratified.

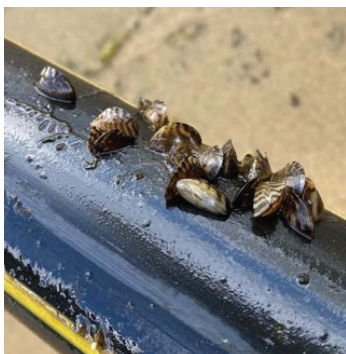
Calcium levels in Long and Mickey remain at levels that Zebra Mussels have been able to colonize in a laboratory setting. Zebra Mussels have been observed in both lakes. The Calcium level in Ruth Lake is not near the level where Zebra Mussels are likely to become a threat.

After assisting in water quality monitoring for many years, Barry Lishawa has decided to retire. We will miss his presence and expertise.

ZEBRA MUSSEL UPDATE

In the last LLA Newsletter from the spring of 2021, we provided an article regarding the alarming emergence of Zebra Mussels in Long Lake. Before 2020, we had very few findings of this invasive species. That year after a few discoveries, we asked that all riparians on the Lake be on the lookout for Zebra Mussels in 2021 and report any occurrences during the summer. The good news is that many riparians responded and provided approximately 25 findings, many with photos that supplied dates and locations. The bad news is that we had about 25 findings, indicating we have a growing population. Your reports came from all areas of the Lake and came in throughout the summer, starting in mid-May and ended late September during dock removal. Most reports had small volumes of only 2-3 zebra mussels, but your photos revealed them to be healthy in size, 1/2-1 inch in length. There was one report of possibly over 100 in a colony around a concrete block that had been in the water for over a year.

So, given the fact that there is no magic remedy for eradicating Zebra Mussels, what can we do? The LLA requests that you continue the excellent work from a year ago. As you come across them, cleanly remove them from their attachment and destroy them on dry land. Do not leave any part of the mussel body in the water. Report the date and location to the LLA board. Contact Rick Dahlstrom either through email or by text at 248-568-4263. PLEASE educate friends, relatives, and renters who may be bringing boats onto the Lake to wash their boats and clean out ballast or bilge tanks before launching. Wake boats with large ballasts can be particularly harmful as an unsuspecting carrier.



This will be our second year of careful monitoring, and your cooperation is greatly appreciated. We hope to gain better clarity on the level of Zebra Mussel infestation, and your reports will be the key to that! Thank you for all that you do to maintain the high quality of Long Lake.

FISHING

The fish survey conducted by the DNR in the spring of 2017 has been published.

The report noted that the Bluegill numbers have “exploded,” showing a 686% increase (98/673) in the number of fish taken compared to the 2007 survey. The Largemouth Bass numbers increased 265% (64/170), and Northern Pike increased 208% (12/25), with a broader range of fish sizes from 11-43 inches. There was a significant increase in the Perch and Rock Bass population. The Walleye, Smallmouth Bass, and Pumpkinseed numbers were similar in size and numbers taken to the 2007 report. The report noted an abundance of forage species in the lake, with far more Shiner minnows present than in 2007. Growth rates were considered suitable for all species.



The DNR is planning to do a Walleye and Pike survey in the spring or fall of 2022 to understand better and manage their populations and determine if further stocking is needed.

The DNR encouraged landowners to reduce fertilizer and chemical treatments and discontinue the practice of clearing nearshore plant growth as they may be contributing to dissolved oxygen depletion and increased temperatures within the lake.

Long Lake continues to have the highest water quality and a solid and vibrant fishery. The full report link can be accessed from the LLA website, or you can download it at:

https://longlakeassociation.com/wp-content/uploads/2022/01/SFR2018-262_740719_7.pdf



OUR LOONS

2021 was another strong year for the loon population on Long Lake. It was not uncommon to have 20+ loons on the lake during the summer. Long Lake continues to host the largest nesting population of loons in the Lower Peninsula.

Last summer, five active nesting sites resulted in 5 chicks that hatched and left the lake in the fall. We are looking forward to another strong nesting season and loon population in 2022.

Please remember to stay outside the buoy markers or at least 200 ft from the nesting sites.



Long Lake Association, Inc.
PO BOX 257
Interlochen, MI 49643

PRESORTED
FIRST CLASS MAIL
US POSTAGE
PAID
Traverse City, MI
Permit #568

Time-Sensitive Material Enclosed:
Membership Dues Statement

Welcome Back to Paradise Social Event
June 6, 2022 at 5:00pm - Boone's Long Lake Inn

2022 Board Meeting Schedule

Board meetings are open to the membership for public comment at the beginning of the meeting. Please contact a board member if you wish to be put on the agenda. Board meetings begin at 5:00pm.

February 16 | Zoom Online-LLA BOD Special Meeting
April 13 | Zoom Online
May 11 | Zoom Online
May 18 | Zoom Online
June 6 | 2022 Annual Discussion Meeting at 5:00 PM at Boone's Long Lake Inn
July 13 | Zoom Online
August 10 | Zoom Online
August 27 | 2022 Annual Meeting at 9:00 AM at Boone's Long Lake Inn
September 14 | Zoom Online
October 12 | Zoom Online
November 9 | Zoom Online if needed

Zoom links to annual meetings can be found on our website

CENTRAL DISPATCH NON-EMERGENCY - 231-922-4550

(non-emergency calls for service for Law Enforcement, Fire, and Emergency Medical Services)

MARINE PATROL - 231-922-2112 (seasonal enforcement of boating laws on inland lakes)

DNR REPORT ALL POACHING (RAP) line-800-292-7800 (CALL OR TEXT)

(If you witness loon harassment, poaching, etc.)

Try to get the MC number when reporting any incident.

Pictures and especially videos of the incident are beneficial.



Boat wash demonstration at Crescent Shores Boat Launch May 27th & 28th and July 2nd. - Presented by Benzie County District